



SMALL HYDRAULIC UNITS



HYDRAULIC POWER UNITS

DC HORIZONTAL TANK

HT SERIES



Series HT- DC Motor

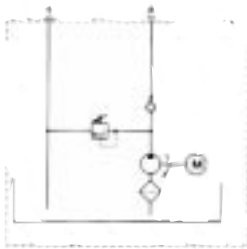
DC POWER UNIT PART NUMBERING SYSTEM:

HT 2 - 12VDC- G.7- DVP

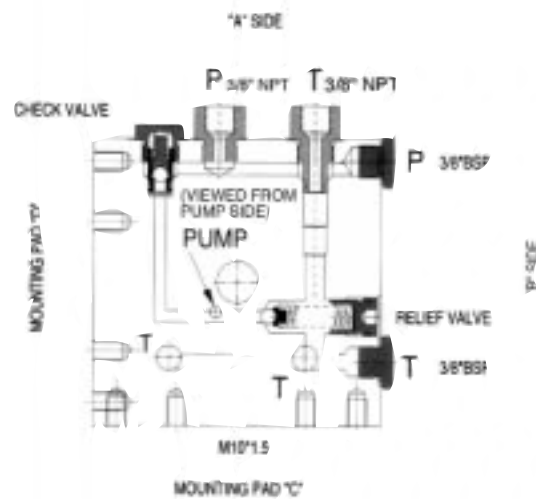
Gallons	Volts	Flow	Option
0.8	12	.7	DV
1.3	24	(GPM@1800)	Dump Valve
2			DVP
			Dump Valve w/ Pendant

Rated @ 2500 PSI Max.
Intermittant Duty

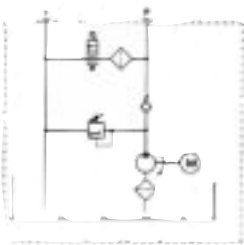
Standard Configuration



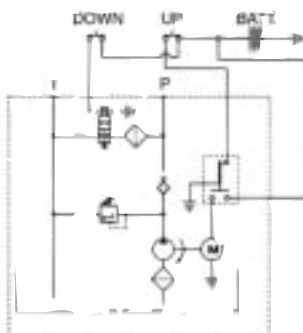
Hyd. Schematic



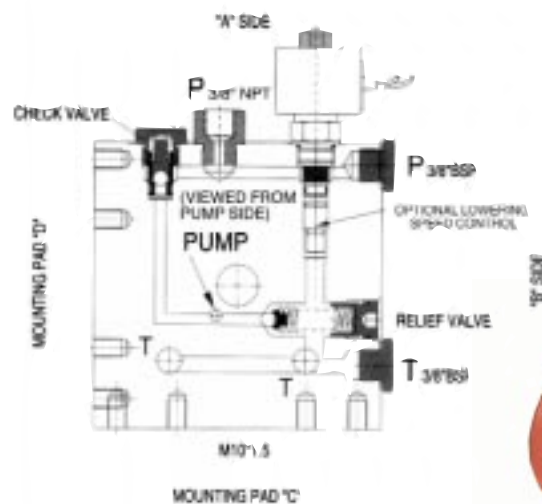
With Lowering Valve- DV



Hyd. Schematic



Hyd. Schematic & Electric Schematic



Unit supplied with 2 button pendant w/ 4 meter cable.

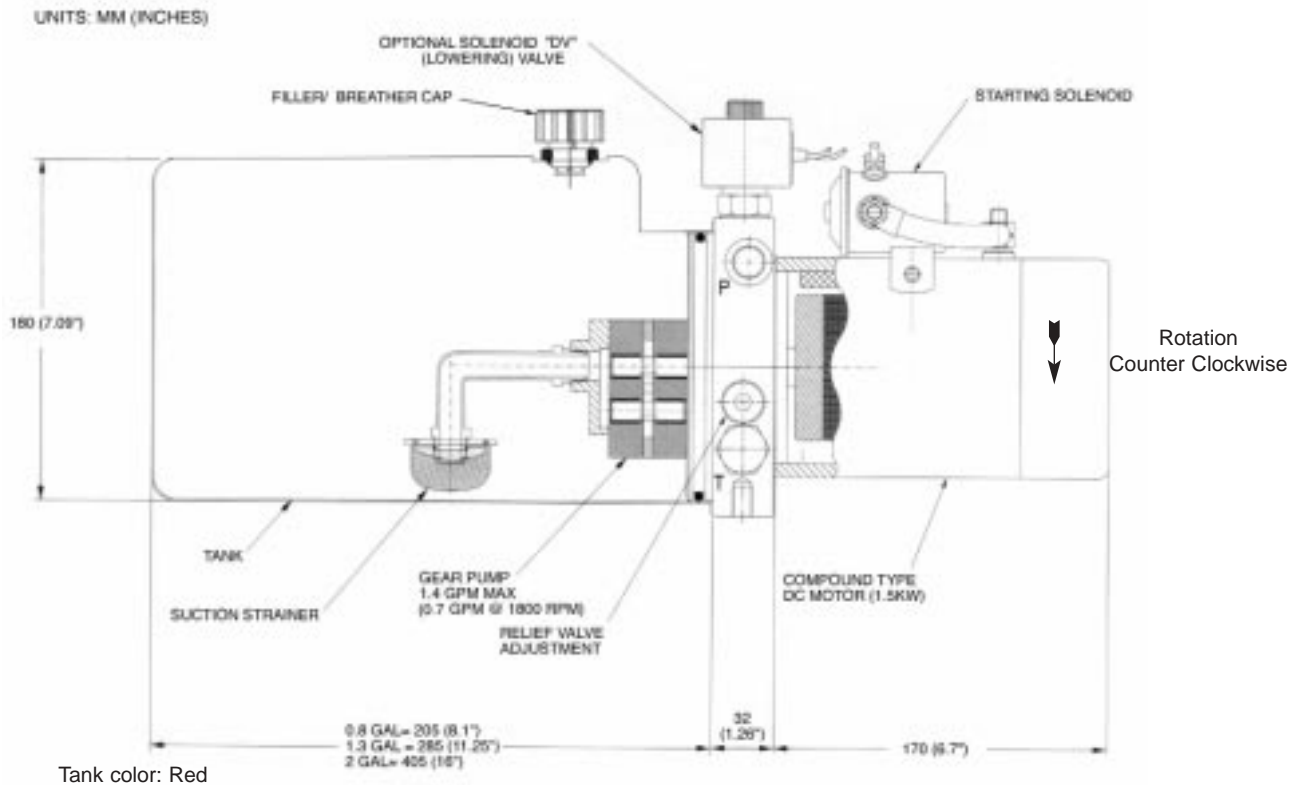


HYDRAULIC POWER UNITS

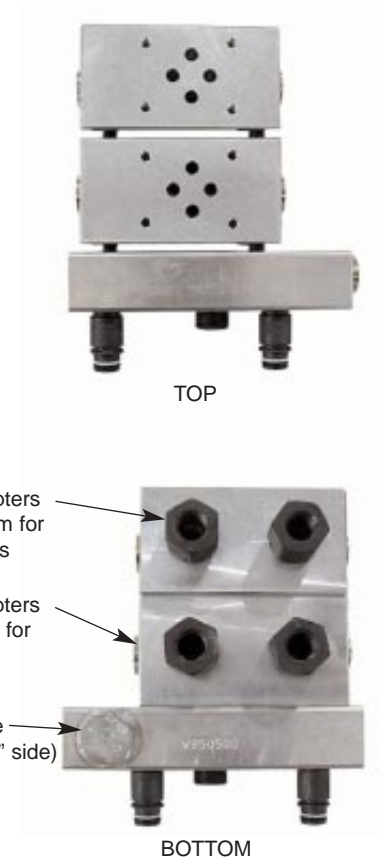
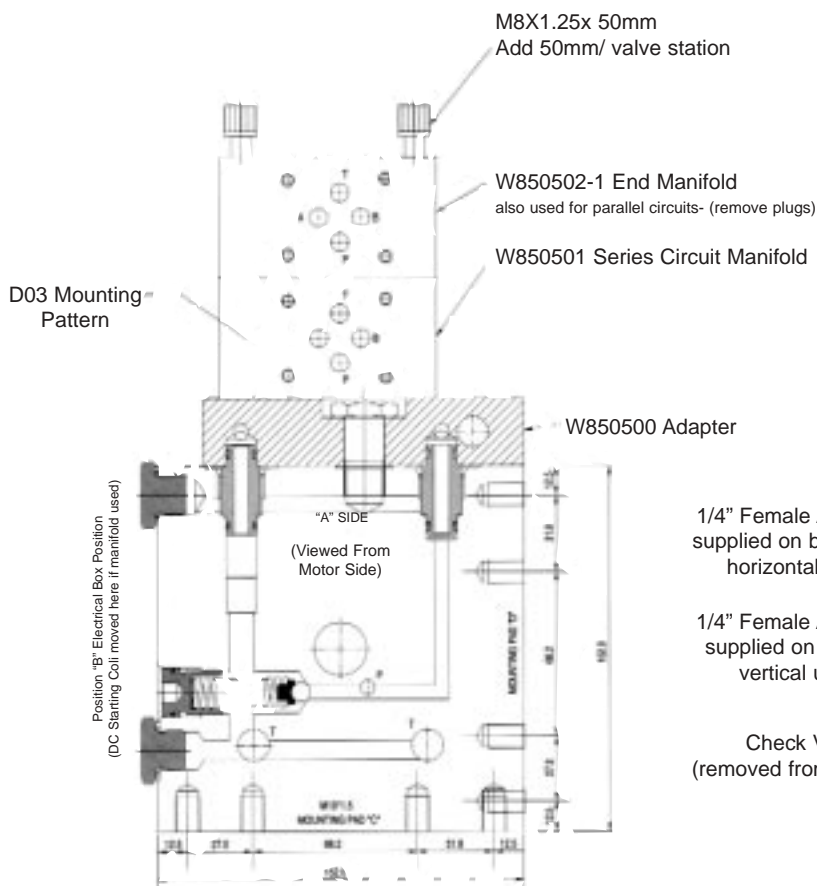
DC HORIZONTAL TANK



Dimensional Data



Optional Manifolds





HT SERIES

HYDRAULIC POWER UNITS

AC HORIZONTAL TANK



Series HT- AC Motor

POWER UNIT PART NUMBERING SYSTEM:

HT 2 - 1HP1- G1.4- Options

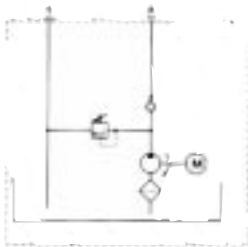
Gallons	HP	Phase	Flow
0.8	1	1	.7
1.3	2	3	1.4
2	3		3

(GPM @ 1800RPM)

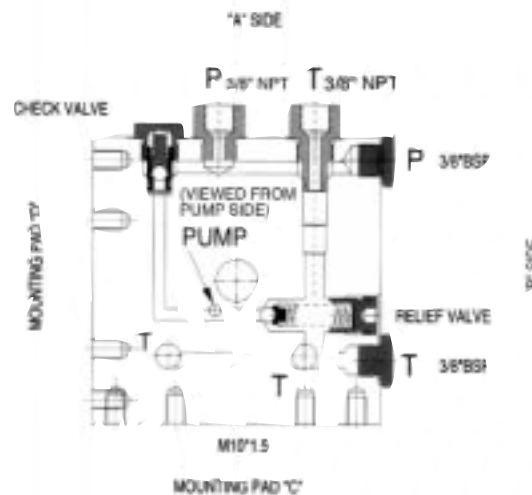
Rated @ 2500 PSI Max.
Continuous Duty

Options
DV Dump Valve (specify voltage & current type)
D03 Manifold (specify number of manifold stations & type of circuit: parallel or series)

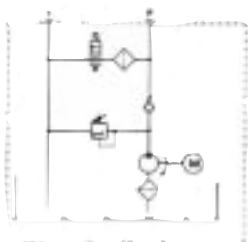
Standard Configuration



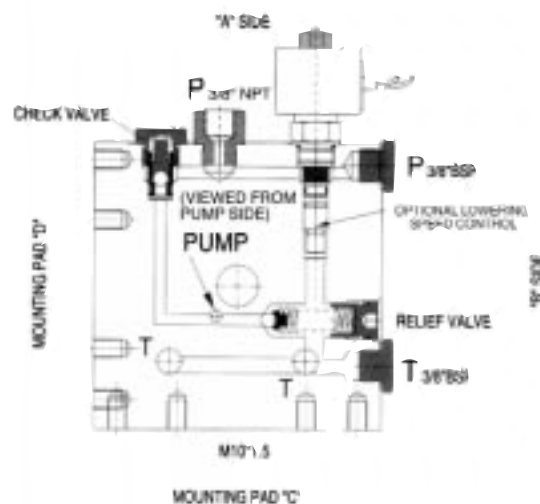
Hyd. Schematic



With Lowering Valve- DV



Hyd. Schematic

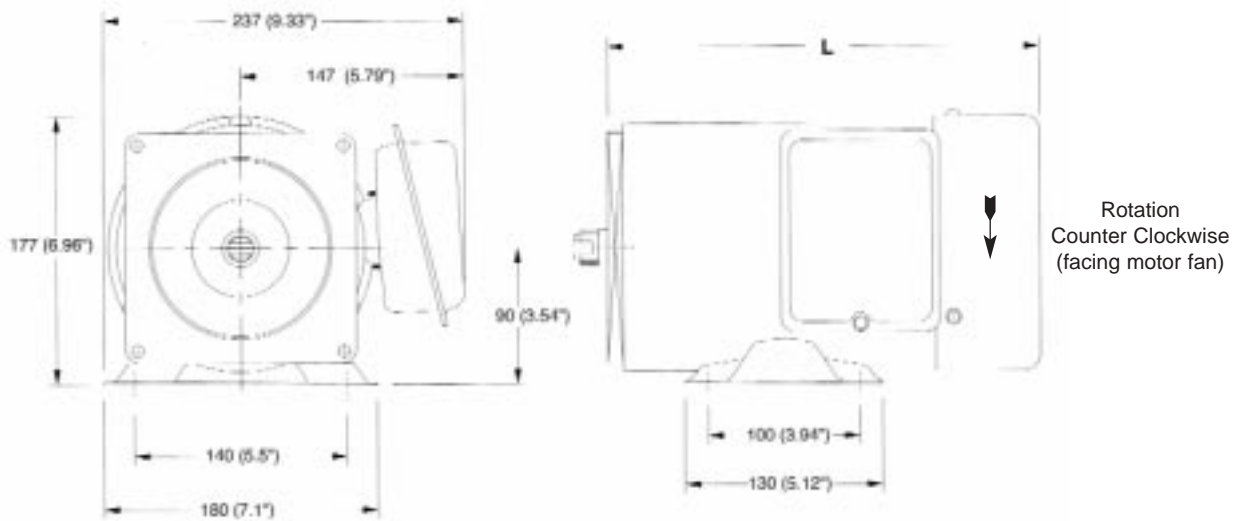
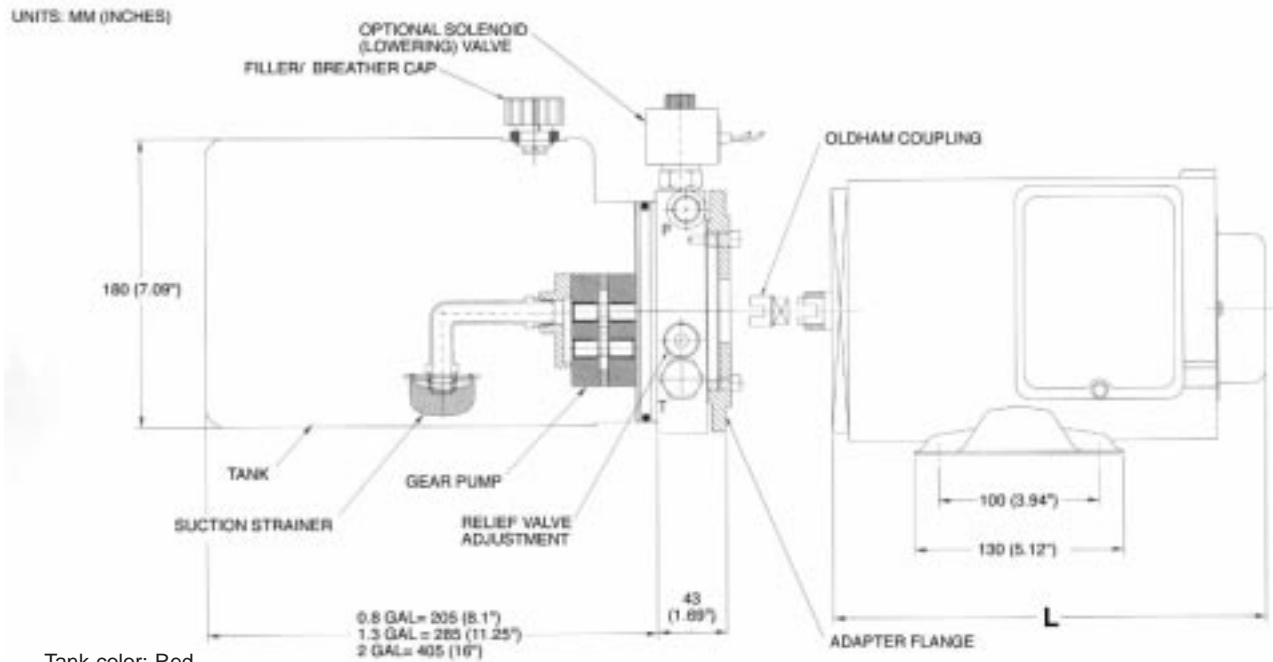


HYDRAULIC POWER UNITS

AC HORIZONTAL TANK



Dimensional Data



MOTOR	POWER	PHASE	VOLTAGE	HERTZ	"L" DIM
1HP1	1HP	1	110/220	60	280 (11")
1HP3	1HP	3	220/440	60	260 (10.25")
2HP1	2HP	1	110/220	60	300 (11.8")
2HP3	2HP	3	220/440	60	280 (11")
3HP3	3HP	3	220/440	60	300 (11.8")

All motors are rated at 1725 RPM



See page 2 for
D03 Adapter and
Manifolds



HYDRAULIC POWER UNITS

VERTICAL TANK

VT SERIES



Series VT- AC Motor

POWER UNIT PART NUMBERING SYSTEM:

VT3 - 2HP1- G1.4- Options

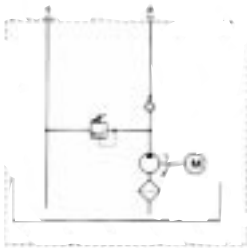
HP	Phase	Flow
1	1	.7
2	3	1.4
3		3

Rated @ 2500 PSI Max.
Continuous Duty

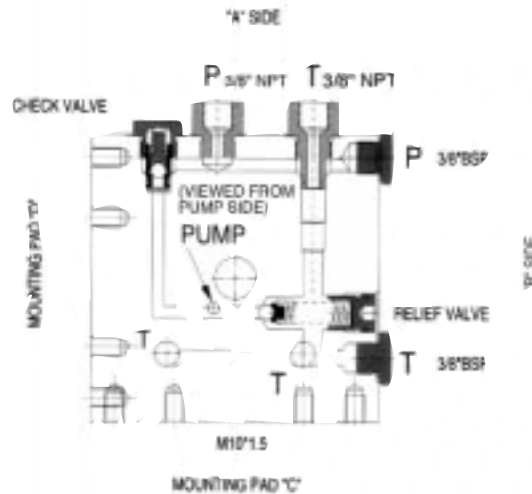
(GPM @ 1800RPM)

Options
DV Dump Valve (specify voltage & current type)
D03 Manifold (specify number of manifold stations & type of circuit: parallel or series)

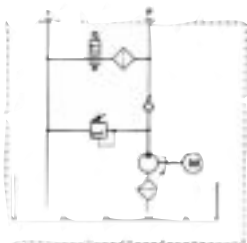
Standard Configuration



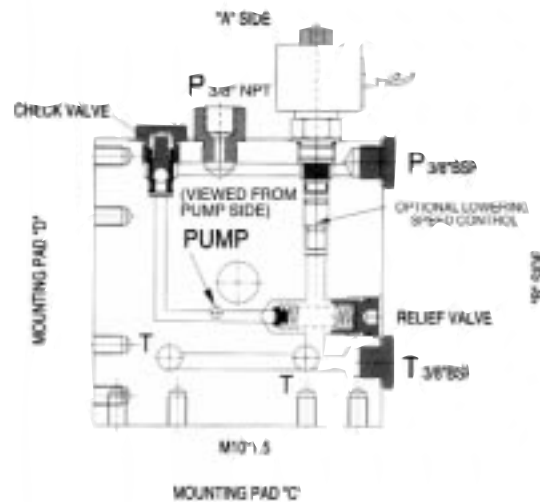
Hyd. Schematic



With Lowering Valve- DV



Hyd. Schematic



HYDRAULIC POWER UNITS

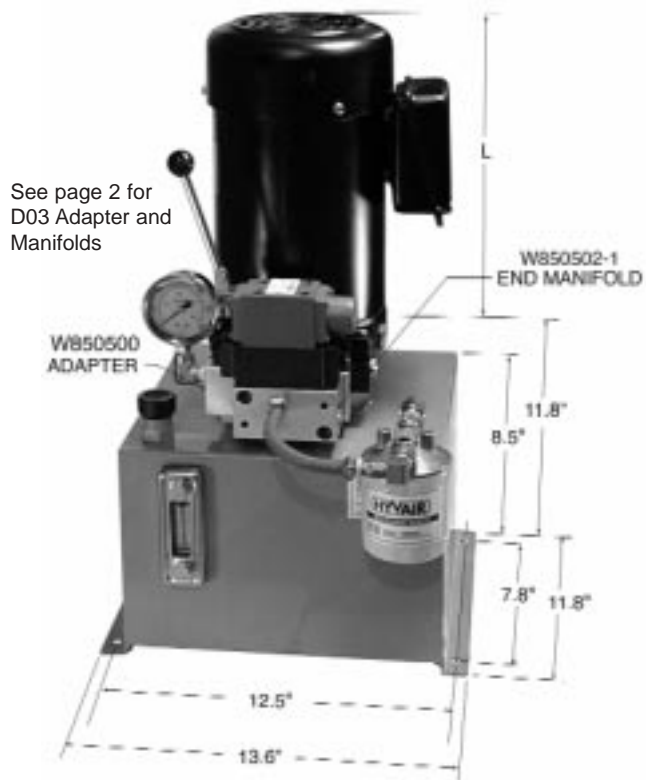
VERTICAL TANK



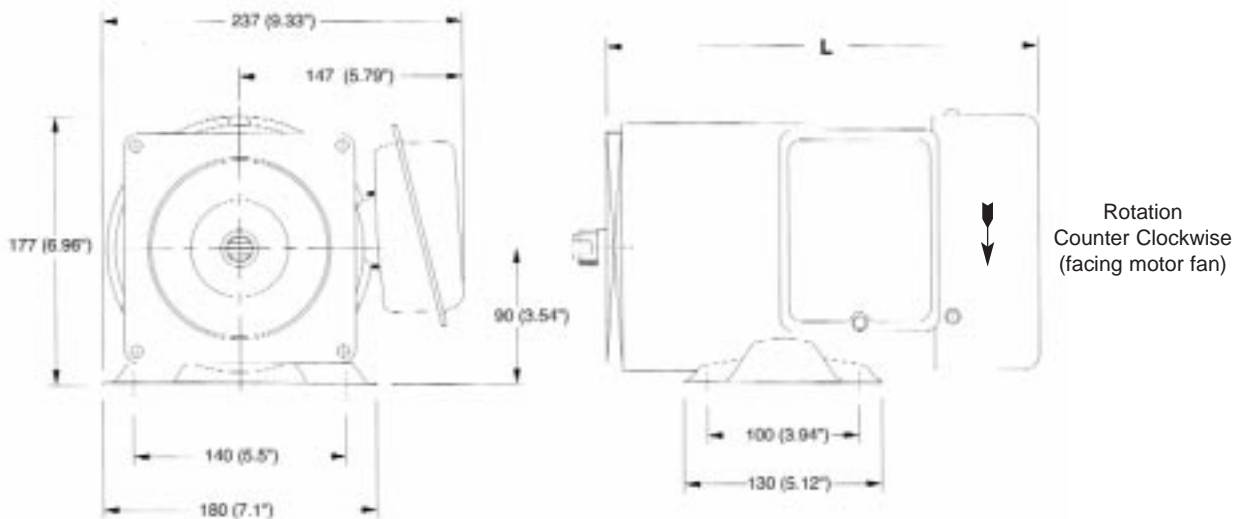
Dimensional Data



Standard Arrangement



With Valve & Return Filter Options



MOTOR	POWER	PHASE	VOLTAGE	HERTZ	"L" DIM
1HP1	1HP	1	110/220	60	280 (11")
1HP3	1HP	3	220/440	60	260 (10.25")
2HP1	2HP	1	110/220	60	300 (11.8")
2HP3	2HP	3	220/440	60	280 (11")
3HP3	3HP	3	220/440	60	300 (11.8")

All motors are rated at 1725 RPM