



SOLENOID OPERATED DIRECTIONAL CONTROL VALVE DE 06 (CETOP 03)

ENGINEERING

1

Ref. No. P09321
Release 07/2002

Description

Direct solenoid operated, spool type, mounting on ISO 4401-03-02.

Five chamber body and spool design provides low-pressure drop, with maximum performance.

Balanced spool design ensures proper shifting force for maximum reliability and long life.

All spools and bodies are interchangeable, simplifying maintenance.

Wet pin DC solenoids ensure better heat dissipation, quieter operation, there by increasing solenoid life.

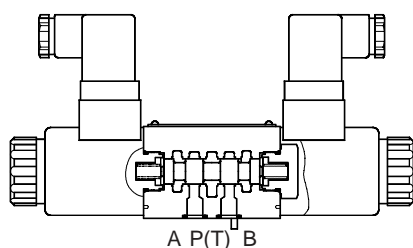
Moulded solenoid coils eliminate moisture problems and ingress of dust.

Plug-in-coils for ease of maintenance.

Indicator lights are a standard feature.



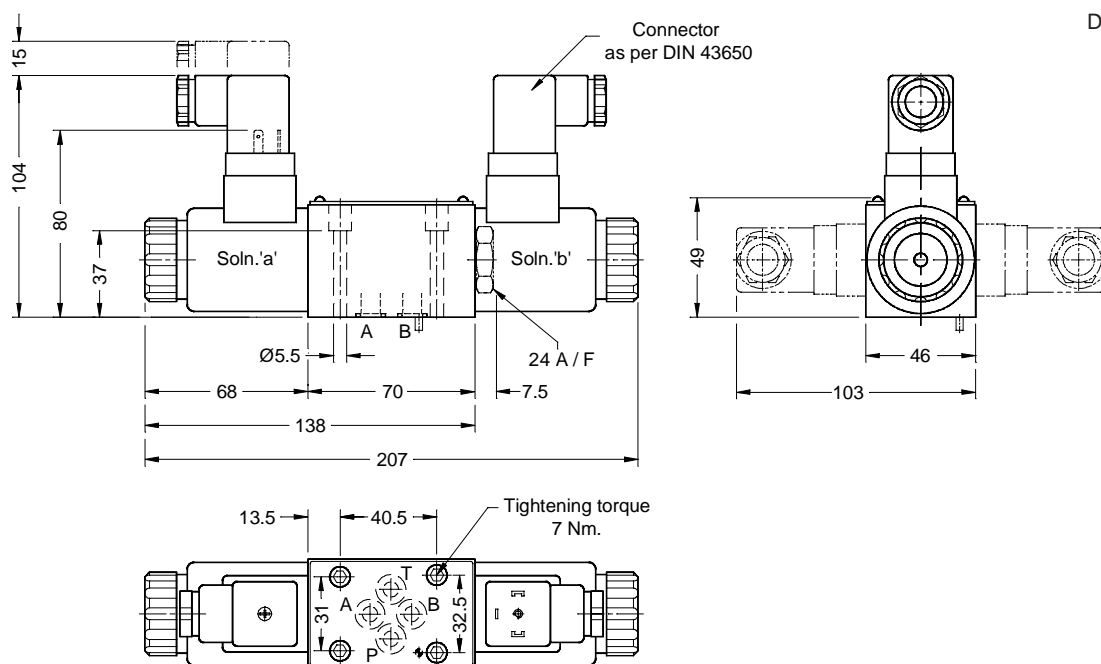
Section



Hydraulic Symbol

- | | | |
|----------------------------|------|-------------------------|
| 2 Position spring return | a W | |
| 2 Position detent | a b | |
| * 2 Position detent | a b | * (For spool B only.) |
| * 2 Position spring return | W b | |
| 3 Position spring return | a b | |

Unit dimension



Polyhydron Pvt. Ltd.

78-80, Machhe Industrial Estate,
Machhe, Belgaum - 590 014. INDIA.

Phone : +91-(0)831-411001
Fax : +91-(0)831-411002
E-mail : polyhydron@vsnl.com
Website : www.polyhydron.com



SOLENOID OPERATED
DIRECTIONAL CONTROL VALVE
DE 06 (CETOP 03)

ENGINEERING

2

Ref. No. P09321

Technical specification

Hydraulic :

Construction	Spool type.
Mounting	Subplate body as per ISO 4401-03-02.
Mounting position	Optional.
Operating Pressure	For ports P, A, B315 bar port T150 bar (For spool type A & B, port T to be used as drain line, if the operating pressure exceeds 150 bar.)
Nominal flow handling capacity	63 lpm.
Max. flow handling capacity	Refer graph.
Flow direction	Refer spool chart.
Hydraulic medium	Mineral oil.
Viscosity range	10 to 380 cSt.
Working temperature range	-20 °C to +70 °C.
Fluid cleanliness requirement	As per ISO code 16/13 or better.
Weight	Valve with Single solenoid - 1.2 kg. Valve with Double solenoid - 1.8 kg.

Electrical :

D.C.Voltage	12 V, 24 V
A.C.Voltage	110 V, 220 V at 50 Hz
Power requirement	30 W
Duty cycle	Continuous
Switching time (ON)	40 ms
(OFF)	30 ms
Max. ambient temperature	50 °C
Max. coil temperature	100 °C
Max. switching frequency	15000 / hour
Protection	IP 65

Note :

AC solenoid coil is basically
a DC coil with built-in rectifier.

Performance curves

Oil Used : ISO VG 68, Test temp : 50 °C.

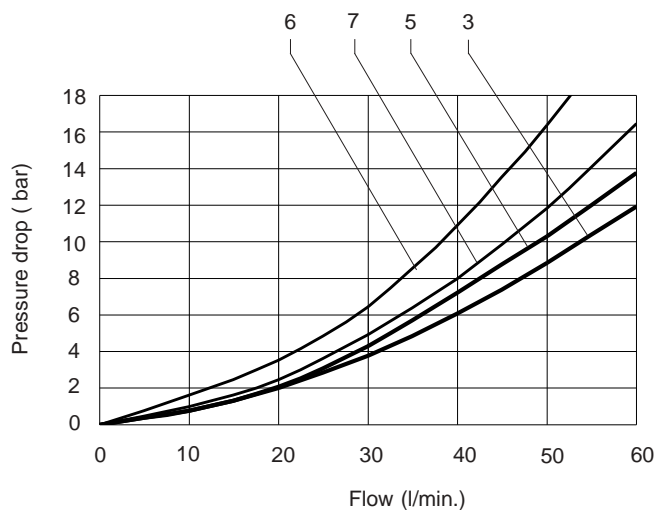
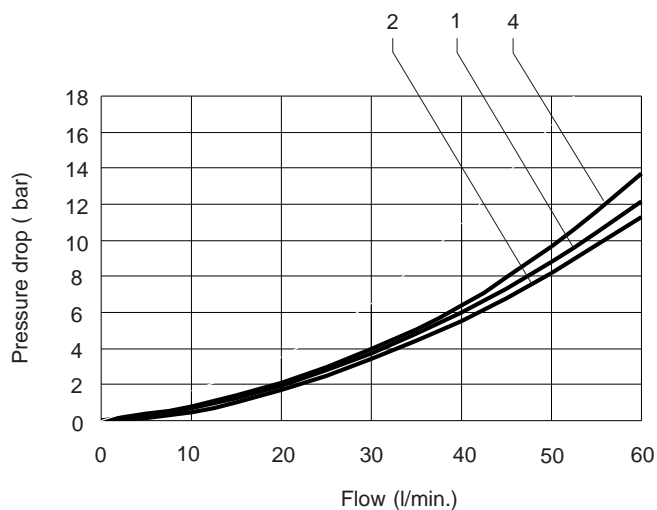


Table showing the relation between the spool type, direction of flow and curve in the above graph to be referred to.

Spool type	Direction of Flow / Curve No.				
	P to A	P to B	A to T	B to T	P to T
A	4	4	--	--	--
B	4	4	--	--	--
C	4	4	5	2	--
D	4	4	5	2	--
E	3	3	5	5	--
F	1	3	1	3	--
G	6	6	6	6	7
H	1	1	2	2	4
J	3	3	2	2	--
L	3	3	2	5	--
M	1	1	5	5	--
P	3	1	3	1	--



SOLENOID OPERATED DIRECTIONAL CONTROL VALVE DE 06 (CETOP 03)

ENGINEERING

4

Ref. No. P09321

Ordering code

4	DE	06	E	S	A220	A	V	01
---	----	----	---	---	------	---	---	----

Service ports
3
4

Directional control
valve solenoid
operated.

Size 06

Spool type
Refer chart

Spring return

S

Detent

(For 2 pos. valve only)

D

Design code subject to
change. Installation
dimensions remain same
for design code 01 thru 09.

V

Viton 'O' Rings

Omit for Nitrile 'O' Ring.

Option for converting
3 position valve to 2 position.

A

Solenoid at 'A' only.

B

Solenoid at 'B' only.

Omit for Standard valve.

Coil voltage

D12	DC12V
D24	DC24V
A110	AC110V, 50 Hz.
A220	AC220V, 50 Hz.

Spool chart

Type	Symbol	Crossover	Type	Symbol	Crossover
	a 0 b			a 0 b	
A			J		
B			L		
C			M		
D			P		
E			Q		
F			U		
G			V		
H					