

HISPEC / DESPEC

Valencia, June 2005

Plunger group:

Bucharest; V. Zamfir et al.

Sofia; D. Balabanski, G.I.Rainovski et al.

Sofia; P.Petkov

Demokritos; S. Harissopoulos

Köln; A.D. et al.

Topics

Design of future RDM Set-ups

- construction of dedicated plunger devices
- plunger with particle detectors

Planning of test experiments

Software development for the data analysis

- relativistic velocities
- broad velocity distributions, extended focal planes
- multiple foil set-ups

Simulation: Plunger devices in tracking arrays like AGATA

Funding

Present activities

Construction of a plunger device for MSU

- coulex at 50MeV/u
- fragmentation

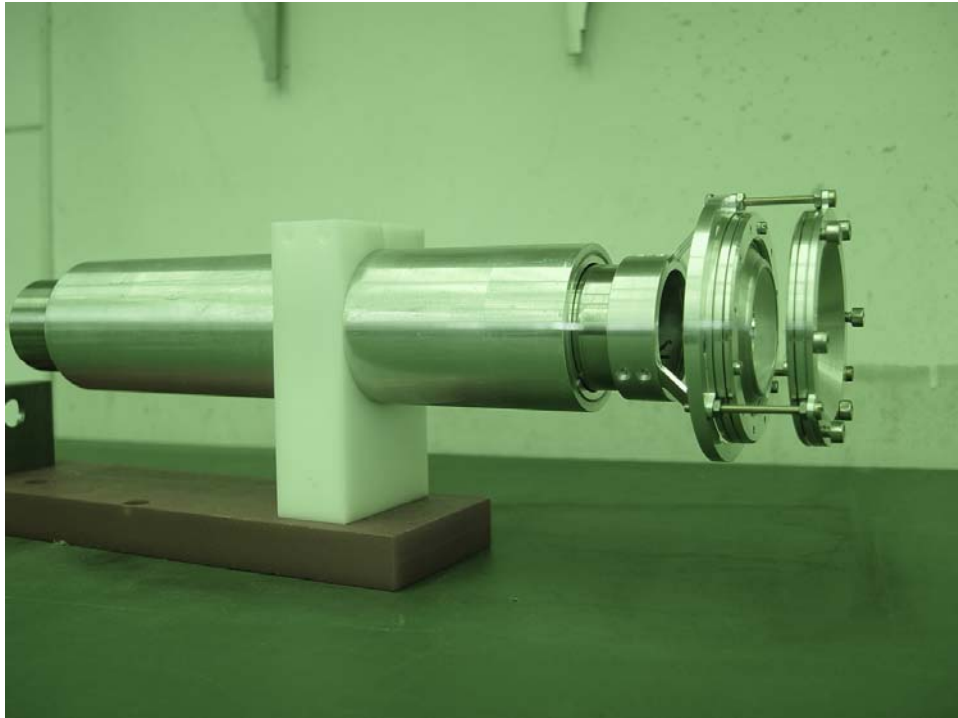
Test experiments

MSU : coulex inv. kin. ; SEGA+S800

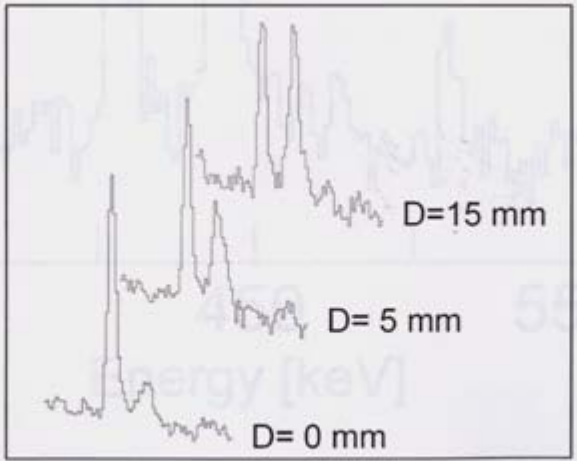
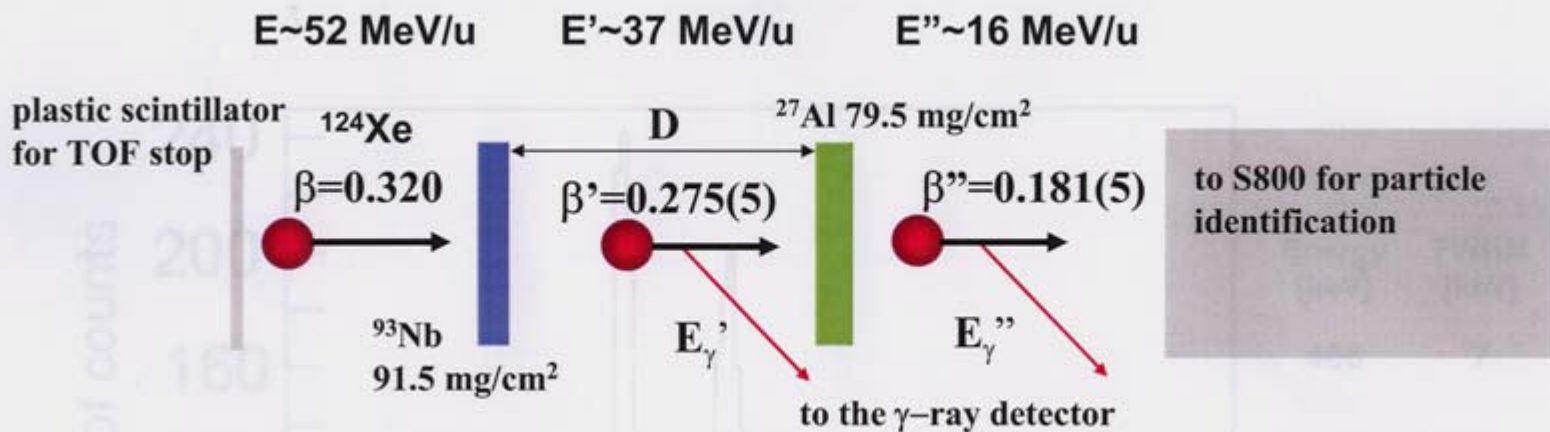
GSI : fragmentation ; RISING

JYFL: coulex inv. kin.; JUROGAM

Software development

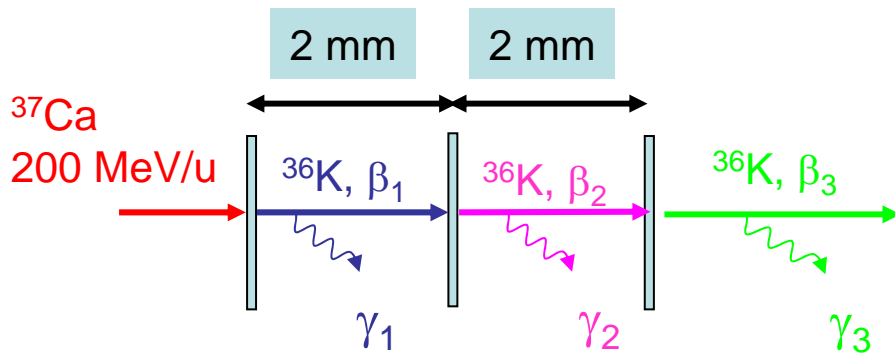


K. Starosta et al. ; RDDS Test @ MSU , NSCL, 2004

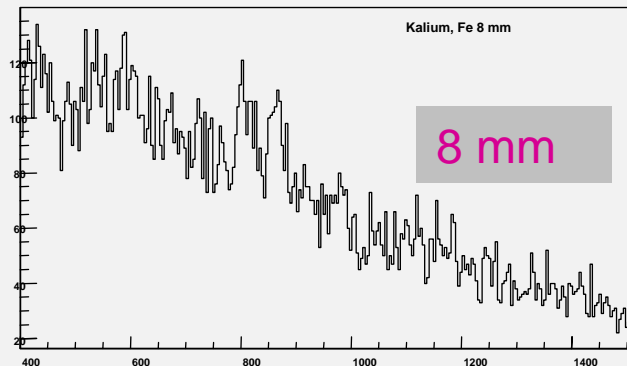
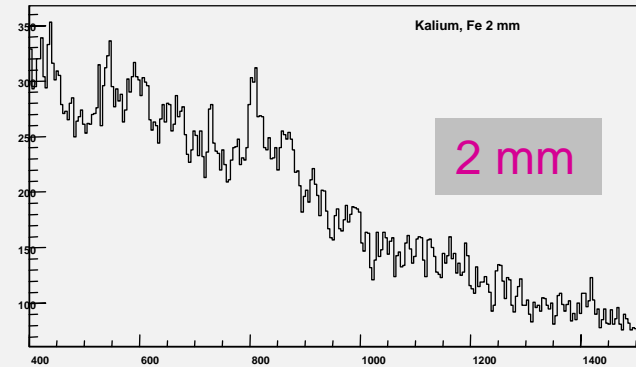


RISING lifetime experiment;
GSI using secondary fragmentation
spokes person : J. Gerl, GSI

Target stack: Fe : 3 x 0.3 g/cm²



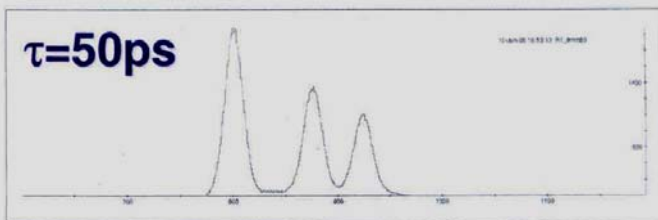
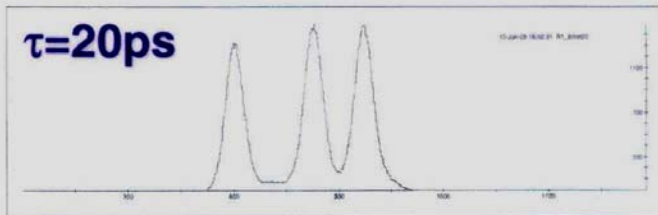
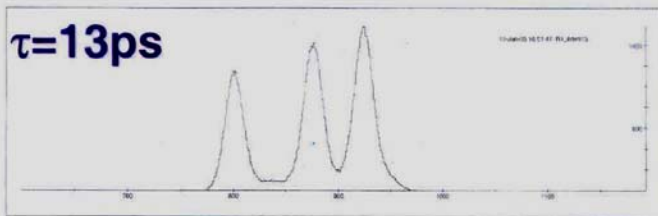
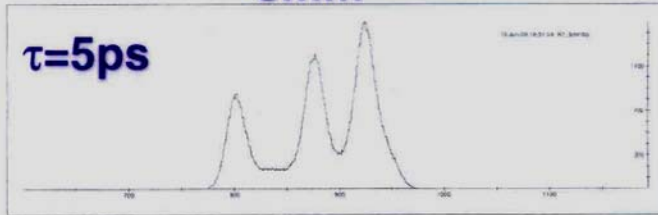
preliminary



New ^{36}K transition

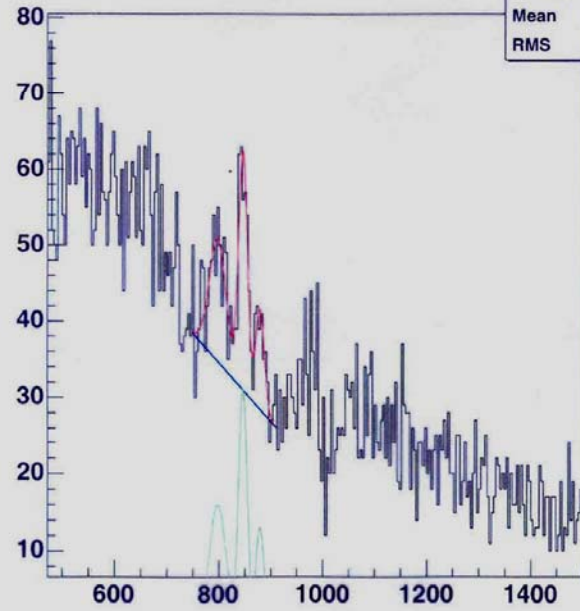
analysis is going on; A. Richard, Köln

8mm



user_cluster_beta1_K24568

user_cluster_beta1_K24568	
Entries	21081
Mean	859.9
RMS	278.9

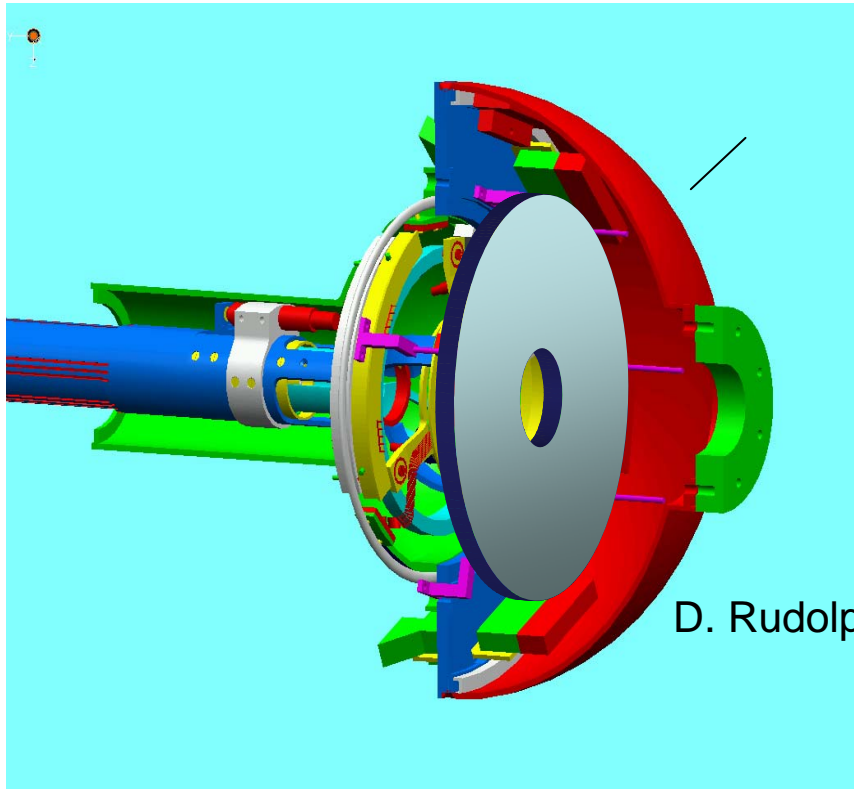


Accepted proposal for an experiment at Jyväskylä

Inverse coulex of $^{128/130}\text{Xe}$ @ 525MeV

Spokespersons: S. Harissopulos, A.D.

Cologne plunger + particle detectors+ JUROGAM



D. Rudolph, Lund

Funding

Köln: 1 postdoc /3years
120 kEUR
1 postdoc /6 months

Others:.....?